

PROJECT CODE 196-2021

- This Drawing and Design is the Property of the Designers. No portion may be used or reproduced without their Written Permission.
- All Dimensions are to be Verified on Site by the Contractor. Any Discrepancies are to be Reported to the Designers Immediately.
- This Drawing is to be Read in Conjunction with the Designers Specifications, Conditions of Contract and Related Consultant Drawings.
- Drawings not Showing the Latest Revisions are to be Cancelled.
- All Dimensions are to be Read not Scaled.
- All Indicated Levels are Finished Levels unless Noted Otherwise.
- Architect is not responsible for any deviation in areas (Civil, Structural, Mechanical etc.).
- Any and All deviations from original drawings is authorized to be made at the discretion of client provided with prior intimation provided to the client by architect about legal implications. Architect in no way whatsoever can be held responsible for such deviations.

DOOR WINDOW SCHEDULE

TYPE	SIZE (MM)		GLASS	UNIT	QTY
	WIDTH	HGT			
D1	1200	2400	6	1	1
D2	1200	2400	6	1	1
D3	1200	2400	6	1	1
D4	1200	2400	6	1	1
D5	1200	2400	6	1	1
D6	1200	2400	6	1	1
D7	1200	2400	6	1	1
D8	1200	2400	6	1	1
D9	1200	2400	6	1	1
D10	1200	2400	6	1	1
D11	1200	2400	6	1	1
D12	1200	2400	6	1	1
D13	1200	2400	6	1	1
D14	1200	2400	6	1	1
D15	1200	2400	6	1	1
D16	1200	2400	6	1	1
D17	1200	2400	6	1	1
D18	1200	2400	6	1	1
D19	1200	2400	6	1	1
D20	1200	2400	6	1	1
D21	1200	2400	6	1	1
D22	1200	2400	6	1	1
D23	1200	2400	6	1	1
D24	1200	2400	6	1	1
D25	1200	2400	6	1	1
D26	1200	2400	6	1	1
D27	1200	2400	6	1	1
D28	1200	2400	6	1	1
D29	1200	2400	6	1	1
D30	1200	2400	6	1	1
D31	1200	2400	6	1	1
D32	1200	2400	6	1	1
D33	1200	2400	6	1	1
D34	1200	2400	6	1	1
D35	1200	2400	6	1	1
D36	1200	2400	6	1	1
D37	1200	2400	6	1	1
D38	1200	2400	6	1	1
D39	1200	2400	6	1	1
D40	1200	2400	6	1	1
D41	1200	2400	6	1	1
D42	1200	2400	6	1	1
D43	1200	2400	6	1	1
D44	1200	2400	6	1	1
D45	1200	2400	6	1	1
D46	1200	2400	6	1	1
D47	1200	2400	6	1	1
D48	1200	2400	6	1	1
D49	1200	2400	6	1	1
D50	1200	2400	6	1	1
D51	1200	2400	6	1	1
D52	1200	2400	6	1	1
D53	1200	2400	6	1	1
D54	1200	2400	6	1	1
D55	1200	2400	6	1	1
D56	1200	2400	6	1	1
D57	1200	2400	6	1	1
D58	1200	2400	6	1	1
D59	1200	2400	6	1	1
D60	1200	2400	6	1	1
D61	1200	2400	6	1	1
D62	1200	2400	6	1	1
D63	1200	2400	6	1	1
D64	1200	2400	6	1	1
D65	1200	2400	6	1	1
D66	1200	2400	6	1	1
D67	1200	2400	6	1	1
D68	1200	2400	6	1	1
D69	1200	2400	6	1	1
D70	1200	2400	6	1	1
D71	1200	2400	6	1	1
D72	1200	2400	6	1	1
D73	1200	2400	6	1	1
D74	1200	2400	6	1	1
D75	1200	2400	6	1	1
D76	1200	2400	6	1	1
D77	1200	2400	6	1	1
D78	1200	2400	6	1	1
D79	1200	2400	6	1	1
D80	1200	2400	6	1	1
D81	1200	2400	6	1	1
D82	1200	2400	6	1	1
D83	1200	2400	6	1	1
D84	1200	2400	6	1	1
D85	1200	2400	6	1	1
D86	1200	2400	6	1	1
D87	1200	2400	6	1	1
D88	1200	2400	6	1	1
D89	1200	2400	6	1	1
D90	1200	2400	6	1	1
D91	1200	2400	6	1	1
D92	1200	2400	6	1	1
D93	1200	2400	6	1	1
D94	1200	2400	6	1	1
D95	1200	2400	6	1	1
D96	1200	2400	6	1	1
D97	1200	2400	6	1	1
D98	1200	2400	6	1	1
D99	1200	2400	6	1	1
D100	1200	2400	6	1	1

SPECIAL NOTE:  
THE BUILDING IS FULLY MECHANICALLY VENTILATED

CLIENT:  
SRI LANKAN AIRWAYS CORPORATION  
150, LAY MANSANA, KADAWALA  
STRUCTURE: 4-STOREY BUILDING WITH 200MM CONCRETE SLAB  
ROOF: 100MM RIGID INSULATION, 50MM POLYSTYRENE INSULATION,  
25MM SAND, 10MM GRANULAR FILL, 100MM CONCRETE SLAB  
FLOORING: AT SLIGHTLY RAISED LEVEL WITH 100MM CONCRETE  
SLAB AND 100MM RIGID INSULATION, 50MM POLYSTYRENE INSULATION,  
25MM SAND, 10MM GRANULAR FILL, 100MM CONCRETE SLAB

SKA Developers  
*S. C. Aravind*  
Partner  
SIGNATURE OF CLIENT

ARCHITECT  
*[Signature]*  
SIGNATURE OF ARCHITECT

STRUCTURE  
*[Signature]*  
SIGNATURE OF ARCHITECT  
**SANJIV J. PAREKH**  
M.E. (STRUCT.), M.E. (CONST. ENG.)  
E.C.C. - 11E-1418702-4  
E.S.E. NO. 104(D) K.M.C.  
STRUC/ENG/1-27 S.M.C.

PROJECT  
PLAN SHOWING (BASEMENT-1) BASEMENT-2 BASEMENT-3  
GROUND +0 - STOREY MIXED USED  
OFFICE, HOTEL, RESTAURANT, SHOPPING COMPLEX  
BUILDING AT UTTORAVAN TOWNSHIP, 3RD ST, SINGAPORE

DRAWING TITLE  
**SA-1.14 - TERRACE FLOOR PLAN**

REVISIONS

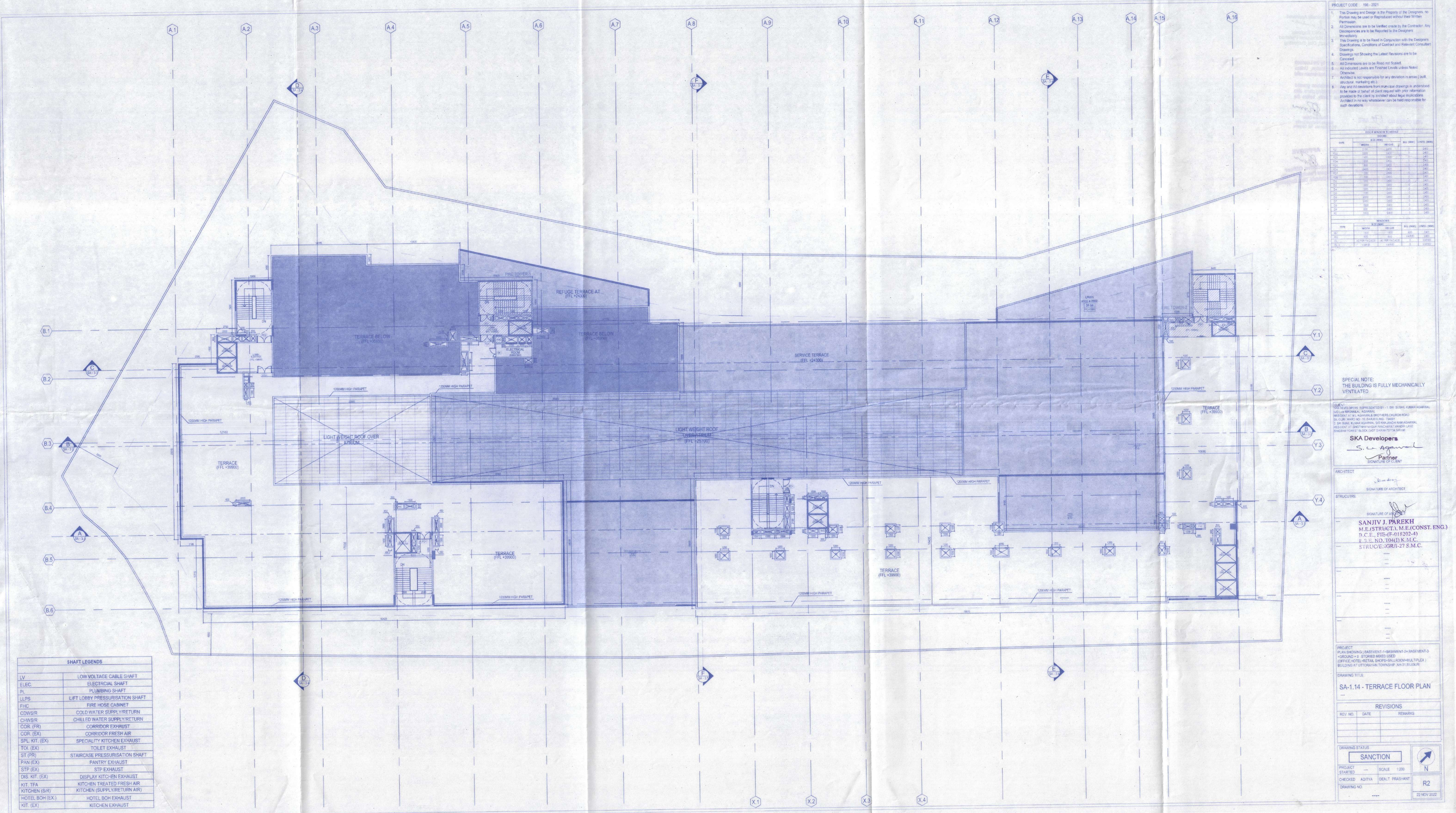
REV. NO.	DATE	REMARKS

DRAWING STATUS  
**SANCTION**

PROJECT STARTED --- SCALE 1:200  
CHECKED ADITYA DEALT PRASHANT  
DRAWING NO. ---  
22 NOV 2022

SHAFT LEGENDS

LV	LOW VOLTAGE CABLE SHAFT
ELEC.	ELECTRICAL SHAFT
PL	PLUMBING SHAFT
LLPS	LIFT LOBBY PRESSURISATION SHAFT
FHC	FIRE HOSE CABINET
CDWS/R	COLD WATER SUPPLY/RETURN
CHWS/R	CHILLED WATER SUPPLY/RETURN
COR. (FR)	CORRIDOR EXHAUST
COR. (EX)	CORRIDOR FRESH AIR
SPL. KIT. (EX)	SPECIALITY KITCHEN EXHAUST
TOI. (EX)	TOILET EXHAUST
ST (PR)	STAIRCASE PRESSURISATION SHAFT
PAN (EX)	PANTRY EXHAUST
STP (EX)	STP EXHAUST
DIS. KIT. (EX)	DISPLAY KITCHEN EXHAUST
KIT. TFA	KITCHEN TREATED FRESH AIR
KITCHEN (SR)	KITCHEN SUPPLY/RETURN AIR
HOTEL BOH (EX)	HOTEL BOH EXHAUST
KIT. (EX)	KITCHEN EXHAUST



Technically Approved  
 Project Engineer  
 Signature and Stamp

Construction of the Building shall be supervised by the Licensed Architect/Engineer during the plan application. Unless otherwise approved by the Authority, the permission shall remain valid for a period of TWO YEARS.  
 57. Permission Granted/Permission granted subject to the conditions noted in the ORDER Building plans also to be approved by the Madigara Panchayat Samity, before the proposed construction undertaken

VIDE ORDER NO. 57/MS  
 DATE 2013/12/23

**APPROVE**  
 Executive Officer  
 Madigara Panchayat Samity  
 P.O. Kadamtala, Dist. Darjeeling

Sub Assistant Engineer (B.P.C)  
 Madigara Development Block  
 P.O. Kadamtala, Dt. Darjeeling

SHT-14 - TERRACE FLOOR PLAN

NO.	REVISIONS	DATE	BY

SCALE	1:50
DATE	2013/12/23
BY	
CHECKED BY	
DESIGNED BY	

25/10/2013  
 SIKK Development  
 Signature

25/10/2013  
 P.O. Kadamtala, Dt. Darjeeling  
 Signature

